

Rinpa Revivals



19th Century



20th Century



21st Century

Introduction

The Japanese word “rinpa” means school (pa) of Kōrin (rin), referring to Kōrin Ogata (1658-1716) who was a major contributor to a style of art first practiced in the 17th century. One of Kōrin’s screen paintings is shown below to illustrate two characteristic features of Rinpa art; namely, smooth curves and repetition. Each of the objects appearing in the picture – water, flower and crane - has an exaggerated curvilinear shape with smooth edges. Each object is also repeated - 2 streams, 11 flowers and 12 cranes. Both the smoothing of shapes and repetition of objects helps to create the illusion of motion and interaction, which brings a picture to life.

Japanese iris (*Iris ensata*)
and white-naped crane
(*Grus vipio*) by Kōrin
Ogata



The use of Rinpa style by Japanese artists declined after Kōrin’s death in the early 18th century. However, its use was later revived, not just once but three times, at intervals about a century apart (i.e., early 19th century, early 20th century, early 21st century). Examples of Rinpa-style art from each of these three revivals are presented in this virtual exhibition. These examples were chosen from prints in the Reader Collection of Japanese Flower and Bird Art. For each print the following information is provided: artist’s name and dates of birth and death (if known), names of the flowers and (or) birds, book name and publishing date (if any), printing method and picture size. The prints are grouped and presented by revival date, starting with the early 19th century revival.

19th Century Revival

Hōitsu Sakai (1761-1828)

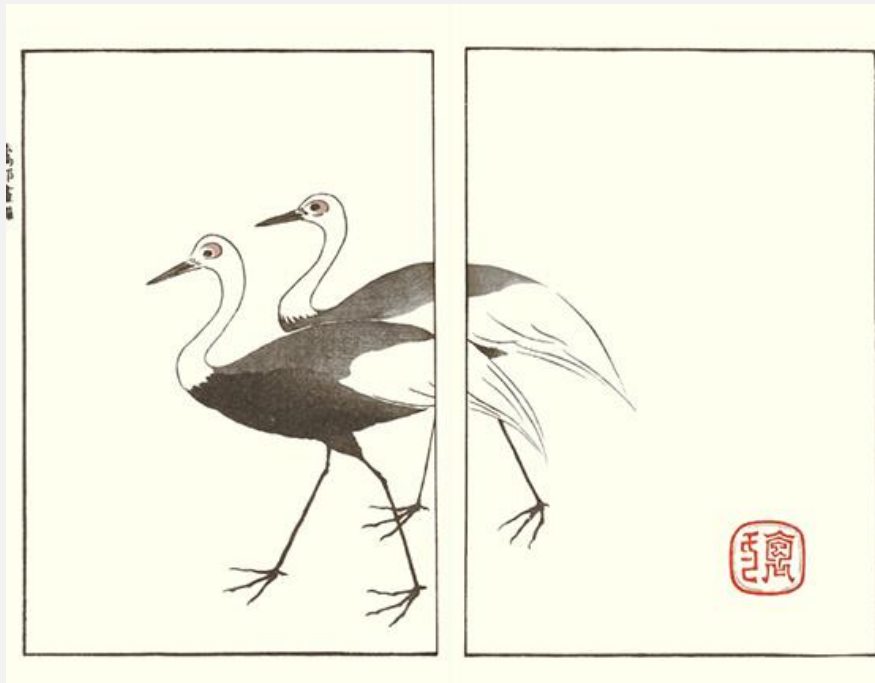
Water-lily (*Nuphar japonicum*) and
common moorhen (*Gallinula
chloropus*), woodblock print, 180 x
215 mm



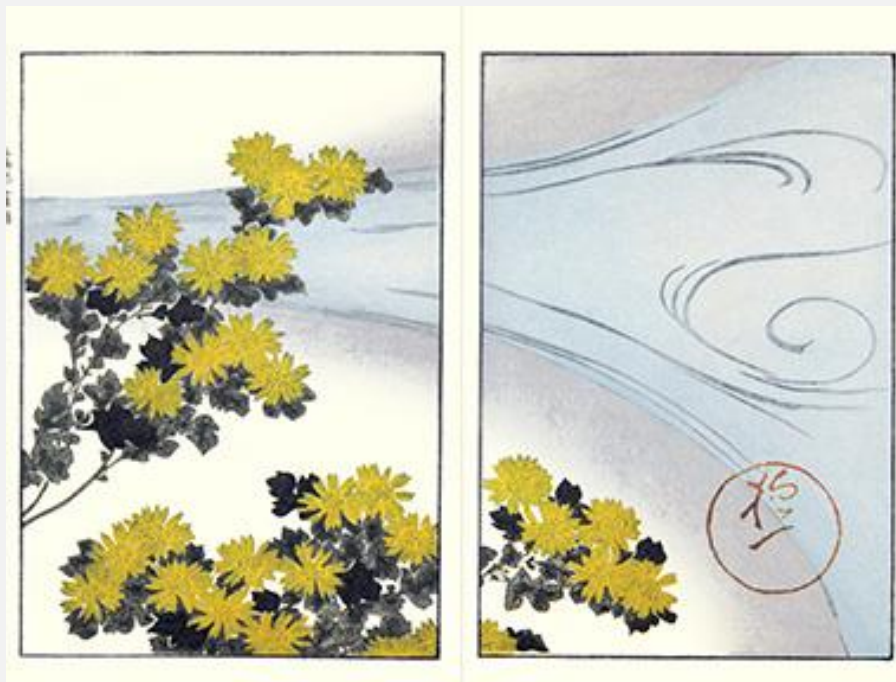
19th Century Revival

Hōitsu Sakai (1761-1828)

White-naped crane (*Grus vipio*),
included in *Ōson Gafu* (i.e., Picture
Album by Ōson), 1817, woodblock
print, 370 x 255 mm



Florist's chrysanthemum
(*Chrysanthemum grandiflorum*),
included in *Ōson Gafu* (i.e.,
Picture Album by Ōson), 1817,
woodblock print, 370 x 255 mm



20th Century Revival

Sekka Kamisaka (1866-1942)

Red-crowned crane (*Grus japonensis*), included in Chigusa (i.e., One Thousand Grasses), 1899-1905, woodblock print, 235 x 350 mm



20th Century Revival

Sekka Kamisaka (1866-1942)

Eurasian tree sparrow (*Passer montanus*), included in Momoyogusa (i.e., Flowers of a Hundred Generations), 1909-1910, woodblock print, 500 x 335 mm



Little egret (*Egretta garzetta*), included in Momoyogusa (i.e., Flowers of a Hundred Generations), 1909-1910 woodblock print, 500 x 340 mm



20th Century Revival

Issui Ogino (active early 1900s)

Asiatic dayflower (*Commelina communis*) and domestic fowl (*Gallus gallus*), included in Zuan Hyakudai (i.e., One Hundred Decorative Designs), 1910, woodblock print, 390 x 270 mm



White-fronted goose (*Anser albifrons*), included in Zuan Hyakudai (i.e., One Hundred Decorative Designs), 1910, woodblock print, 270 x 190 mm



20th Century Revival

Issui Ogino (active early 1900s)

Little ringed plover (*Charadrius dubius*), included in Zuan Hyakudai (i.e., One Hundred Decorative Designs), 1910, woodblock print, 270 x 190 mm



Domestic fowl (*Gallus gallus*), included in Zuan Hyakudai (i.e., One Hundred Decorative Designs), 1910, woodblock print, 270 x 190 mm



20th Century Revival

Kyōzō Yamada (active 1930s)

Barn swallow
(*Hirundo
rustica*),
woodblock
print, 330 x
440 mm



20th Century Revival

Kyōzō Yamada (active 1930s)

Marlberry (*Ardisia japonica*) and
winter wren (*Troglodytes
troglodytes*), woodblock print,
330 x 440 mm



Lespedeza (*Lespedeza* sp.) and
goldcrest (*Regulus regulus*),
woodblock print, 330 x 440 mm



20th Century Revival

Kōyō Nakagawa (active 1930s)

Field horsetail (*Equisetum arvense*)
and Eurasian bullfinch (*Pyrrhula
pyrrhula*), included in Kachō Zu
(i.e., Drawings of Flowers and
Birds), 1930, woodblock print, 300
x 425 mm



20th Century Revival Kōyō Nakagawa (active 1930s)

Lespedeza (*Lespedeza* sp.) and Japanese quail (*Coturnix japonica*), included in Kachō Zu (i.e., Drawings of Flowers and Birds), 1930, woodblock print, 300 x 425 mm



Florist's chrysanthemum (*Chrysanthemum grandiflorum*) and varied tit (*Sittiparus varius*), included in Kachō Zu (i.e., Drawings of Flowers and Birds), 1930, woodblock print, 300 x 425 mm



21th Century Revival

Fumiaki Mutō (active 2000s)

Lespedeza (*Lespedeza* sp.), balloon flower (*Platycodon grandiflorus*), scabious patrinia (*Patrinia scabiosifolia*) and green pheasant (*Phasianus versicolor*), digital print, 420 x 570 mm



21th Century Revival Fumiaki Mutō (active 2000s)

Chrysanthemum (*Chrysanthemum* sp.) and mandarin duck (*Aix galericulata*), digital print, 420 x 570 mm



2/30 菊に鸕鷀 Fumiaki Mutō

Japanese iris (*Iris ensata*), monochoxia (*Monochoria korsakowii*) and common kingfisher (*Alcedo atthis*), digital print, 420 x 570 mm



2/30 川蟬に花菖蒲 Fumiaki Mutō